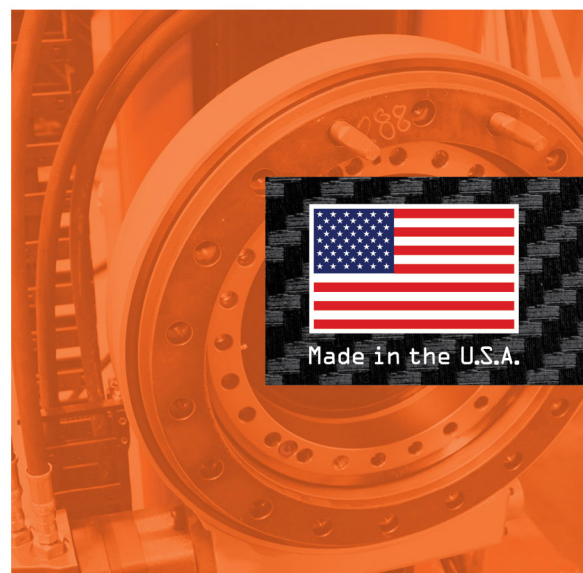


# ALM

## POSITIONERS

The *LEADER* in Intelligent Positioning Equipment





# Speaking of benefits...

At a glance, what are the advantages of using a positioner?



## **ROI:**

Positioners result in higher profits, productivity and reduced consumables. They can boost your production throughput by 40%+.



## **Re-deployable:**

When your needs change, so do our positioners. Leverage your investment by adding on or reconfiguring your existing unit.



## **Safety:**

The days of dangerous rigging slings and fork trucks are gone, and your operation just got a whole lot safer.



## **Ergonomics:**

Improved ergonomics and accessibility mean your employees are less fatigued and more focused on perfecting your quality and service.



## **Customization:**

Our positioners are tailored to the unique needs of your business and engineered with flexibility in case your needs change.



## **Ongoing support:**

Our team provides you with responsive, dedicated support and partnership from day one.



Allow us to introduce ourselves.

# The industry leader in intelligent positioners engineered to boost ROI, quality and safety.

At ALM Positioners, we start with you. Our industry-leading positioners are engineered with the goal of increasing your operations productivity, profits, safety and ergonomics. Our promise is to deliver solution-based intelligent positioners and a customer service experience that is second to none. And we'll work relentlessly to make sure that promise is kept.



Fixed Headstock & Mobile Tailstock



3-Axis Skyhook

## SOME INDUSTRIES WE SERVE

- + Agriculture
- + Construction/Mining
- + Transportation
- + Aerospace
- + Defense/Military
- + Custom Applications



# YOUR HEAVY-LIFTING LINEUP

Which type of positioner is the best fit for you?

## HEADSTOCK & TAILSTOCK

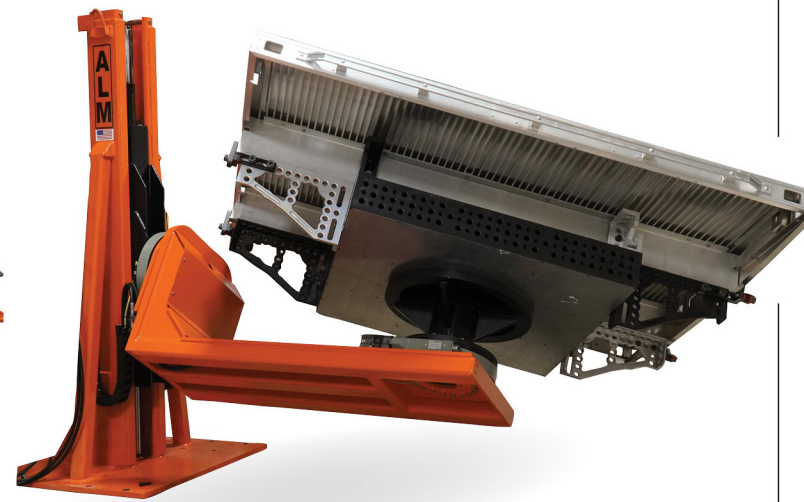


**Loading capacity:** 4,000-125,000 lbs.

### FEATURES:

- + Vertical elevation is variable by model. 30-92"
- + Electronically equalized hydraulic elevation control
- + Solenoid controlled safety pawls
- + Fixed elevation and short stroke options available
- + Single acting hydraulic cylinder in each column
- + Mobile, portable and adjustability available
- + Custom application can allow positioner to be moved while loaded

## 3-AXIS SKYHOOK & DROP CENTER



**Elevating Skyhook loading capacity:** 3,500-12,000 lbs.

**Drop Center/Headstock & Tailstock loading capacity:** 10,000+ lbs.

### FEATURES:

- + 3 axis of motion with 36-92" of vertical elevation
- + 360° rotation off the headstock
- + 360° rotation on the hook or backbone
- + Allows positioning in confined spaces to be moved while loaded

## HEADSTOCK ONLY/SINGLE COLUMN



**Loading capacity:** 1,000-25,000 lbs.

### FEATURES:

- + Vertical elevation is variable by model. 30-92"
- + Electronically equalized hydraulic elevation control
- + Solenoid controlled safety pawls
- + Fixed elevation and short stroke options available

### Quality Policy

We strive to provide customer satisfaction by delivering quality products on time, providing outstanding customer service, and supporting a company culture of continuous improvement.



## WHEN YOUR NEEDS CHANGE, so do our positioners.

We have designed and built our positioners with your changing business needs in mind. Our suite of products is modular, making them versatile and easy to customize.

Instead of purchasing a new positioner, you can leverage your investment with re-deployable capital by upgrading your plug and play controls.

Customers can step up to the Programmable PLC option to increase efficiency by adding "one touch" part positioning or integrate with advanced custom/robot solutions.

Learn more @ [almmh.com](http://almmh.com)

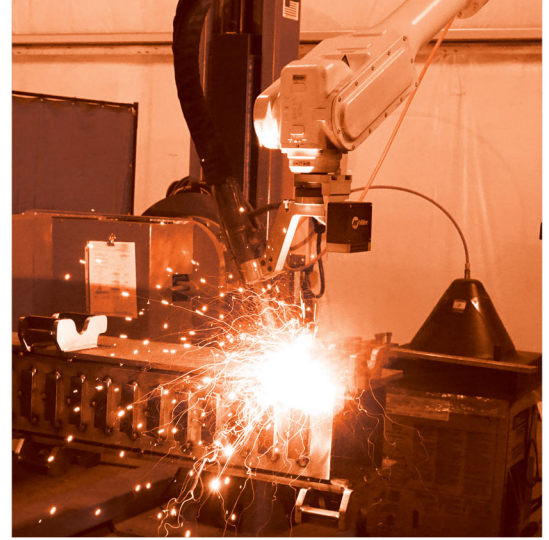


Made in the U.S.A.





Fixed Headstock & Adjustable Tailstock



Fixed Headstock & Tailstock-Short Stroke



Rock Island, IL

## Our story

Originally established in Streator, IL, in 1982, we began building positioners in 2002. Since then, we have shipped more than 2,200 positioners to a variety of companies across North America and internationally. In 2015, ALM was relocated to Rock Island, IL, to our state-of-the-art, 24,000-square-foot facility. Focusing on 13 industries, we provide positioning solutions to customers ranging from custom manufacturing shops to Fortune 100 companies.

**At ALM Positioners, we pride ourselves on your customer experience.** Our customers trust us because we're responsive, experienced and focused on solutions. You'll get dedicated support and partnership from day one.

Ready to increase your  
**PROFIT AND PRODUCTIVITY?**

Call ALM Positioners at **309-787-6200**  
to discuss your optimal positioner solution.

